

COMMON PRONG - SE64 Series



0.60 Inches
(16mm)



.90 Inches
(23.5mm)

SE64-A 1.3mm	50 Dia.x.01=.50 ct.	3.9	Gr.
SE64-A 1.5mm	46 Dia.x.015=.69 ct.	3.9	Gr.
SE64-A 1.7mm	40 Dia.x.022=.88 ct.	3.9	Gr.
SE64-A 2.0mm	34 Dia.x.033=1.12 ct.	4.5	Gr.
SE64-A 2.3mm	30 Dia.x.047=1.41 ct.	5.5	Gr.
SE64-A 2.8mm	26 Dia.x.086=2.23 ct.	6.0	Gr.

SE64-B 1.3mm	78 Dia.x.01=.78 ct.	4.9	Gr.
SE64-B 1.5mm	70 Dia.x.015=1.05 ct.	5.2	Gr.
SE64-B 1.7mm	64 Dia.x.022=1.41 ct.	5.8	Gr.
SE64-B 2.0mm	54 Dia.x.033=1.78 ct.	6.3	Gr.
SE64-B 2.3mm	48 Dia.x.047=2.26 ct.	7.0	Gr.
SE64-B 2.8mm	40 Dia.x.086=3.44 ct.	8.0	Gr.



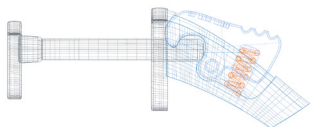
1.2 Inches
(30.5mm)



1.5 Inches
(37.8mm)

SE64-C 1.3mm	110 Dia.x.01=1.10 ct.	4.4	Gr.
SE64-C 1.5mm	98 Dia.x.015=1.47 ct.	6.1	Gr.
SE64-C 1.7mm	88 Dia.x.022=1.94 ct.	7.1	Gr.
SE64-C 2.0mm	76 Dia.x.033=2.51 ct.	8.2	Gr.
SE64-C 2.3mm	66 Dia.x.047=3.10 ct.	9.0	Gr.
SE64-C 2.8mm	54 Dia.x.086=4.64 ct.	10.0	Gr.

SE64-D 1.3mm	140 Dia.x.01=1.40 ct.	5.2	Gr.
SE64-D 1.5mm	120 Dia.x.015=1.80 ct.	8.6	Gr.
SE64-D 1.7mm	108 Dia.x.022=2.38 ct.	10.0	Gr.
SE64-D 2.0mm	94 Dia.x.033=3.10 ct.	11.0	Gr.
SE64-D 2.3mm	84 Dia.x.047=3.95 ct.	11.3	Gr.
SE64-D 2.8mm	68 Dia.x.086=5.85 ct.	12.0	Gr.



Push-Button Mechanism
Extra secure and easy to use



1.8 Inches
(45mm)

SE64-E 1.3mm	170 Dia.x.01=1.70 ct.	9.8	Gr.
SE64-E 1.5mm	148 Dia.x.015=2.22 ct.	10.7	Gr.
SE64-E 1.7mm	134 Dia.x.022=2.95 ct.	12.2	Gr.
SE64-E 2.0mm	114 Dia.x.033=3.76 ct.	13.7	Gr.
SE64-E 2.3mm	102 Dia.x.047=4.79 ct.	14.0	Gr.
SE64-E 2.8mm	84 Dia.x.086=7.22 ct.	15.0	Gr.